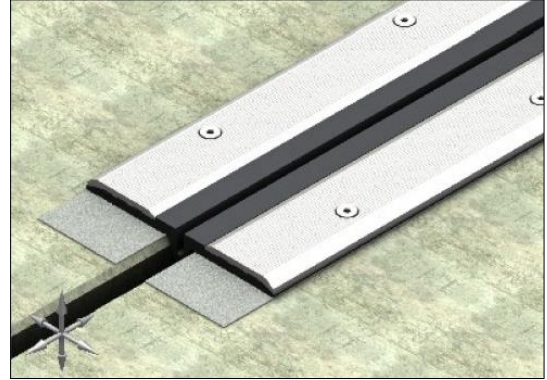
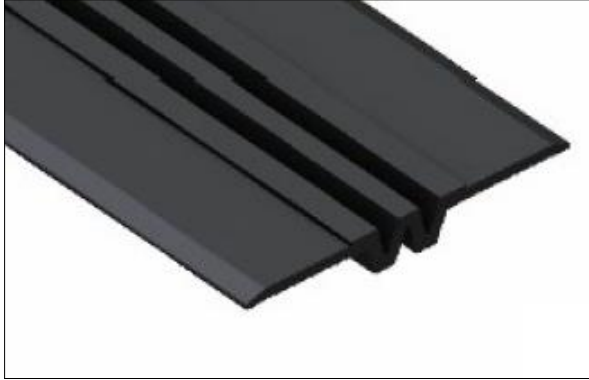


TECHNICAL DATA SHEET

WATERPROOF EXPANSION PROFILE DEFLEX 505 and DEFLEX E 505



PRODUCT DESCRIPTION

The profile is made of Nitriflex plastic. It has a compensating part in two variants:

- single channel for DEFLEX 505-020- dual channel for DEFLEX 505-050.

The element of the profiles are aluminium flat bars or pressure profiles. Their surface is grooved and it guarantees anti-slip surface of the installed profiles. The product is resistant to road salts, gasoline and other external factors. The expansion profile is available in a flat and corner version (DEFLEX E).

APPLICATION

It is intended for mounting on finished floor surfaces at a later stage of implementation. The profile is used on car parks, multi-storey car parks, underground garages and wet rooms where water resistance is required.

REFERENCE DOCUMENTS

- Catalogue: *Waterproof expansion profiles*;
- Technical approval ITB: *AT-15-8807/2011*;
- Appendix no. 1,2 and 3 to *AT-15-8807/2011*;
- Hygienic approval PZH: *HK/W/0985/2016*.

ASSEMBLY METHOD

Before installation, assembly holes should be made in the ground with spacing of approx. 245 mm. Clean the place of installation of the profile from dust, sand and any dirt. Apply the sealing layer and priming layer according to recommendations of the sealing material used. After laying the sealing layer, place the profile in the expansion joint with the proper spacing. After the sealing layer has been bonded, the pressure profiles can be attached to the profile arms. Use the torque wrench to tighten the mounting anchors with the torque recommended for the anchor used. When installing in a niche, the above steps should be preceded by making an expansion joint.

STORAGE / TRANSPORT

The expansion profiles are stored and transported in wooden boxes, whereas the sealing insert on the pallet secured with a protective film.

NOTES

When assembling profiles, the rules of health and safety at the construction site and the guidelines presented in this document should be observed. It can be installed in a niche or in an overlay. The Deflex 505-020 profile is available only in the version with one compensating channel.

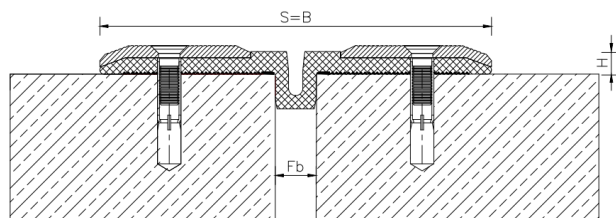
TECHNICAL AND TRADE DATA

	Deflex 505-020 Deflex E 505-020	Deflex 505-050 Deflex E 505-050
The nominal width of the expansion joint Fb[mm]	20	50
The total width of the expansion profile B/B _E [mm]	190/106	210/130
Visible profile width after assembly S/S _E [mm]	190/106	210/130
Profile height H/H _E [mm]	8	8
Expansion joint movement compensation W [mm]	30(-10/+20)	40(-15/+25)
Colour	Black	
Material	Supporting sections - aluminium - parameters in accordance with PN-EN 755. Nitriflex sealing insert - permanently elastic material, resistant to, among others for oils, oxidation, acids, UV radiation, atmospheric influences and temperature (up to + 65 ° C) as well as aging and road salt.	
Standard length L [m]	Sealing insert - 16 Profile - 4	

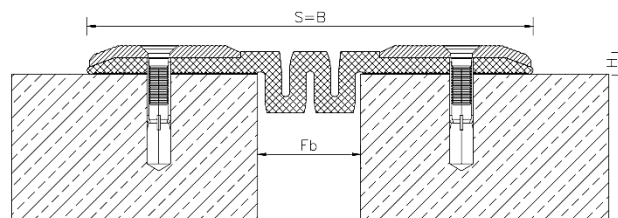
MOUNTING ACCESSORIES

Product name	Consumption per 1mb of profile	Article no.
Aluminum grooved profile 74x6x4000 mm, holes fi 10x245 mm (overlay assembly)	2mb/1mb	MP-PA-00-0-22432
Aluminum grooved profile 74x6x4000 mm, holes 10x245 mm (installation in a niche)	2mb/1mb	MP-PA-00-0-22431
Sleeve ancho FSA 10/10 S	7,5 szt./1mb	MO-MM-00-0-04361
Screw M8x60 A2 DIN 7991 full thread	7,5 szt./1mb	MO-SP-00-4-04448
Sealing putty Sikaflex PRO 3 W gray 600ml	0,41 szt./1mb	CH-XX-00-0-02823
Primer Sika Primer 3 N	0,01 szt./1mb	CH-XX-00-0-02821

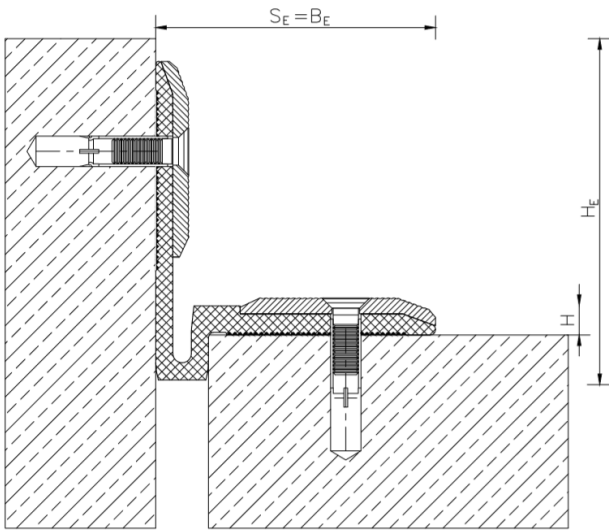
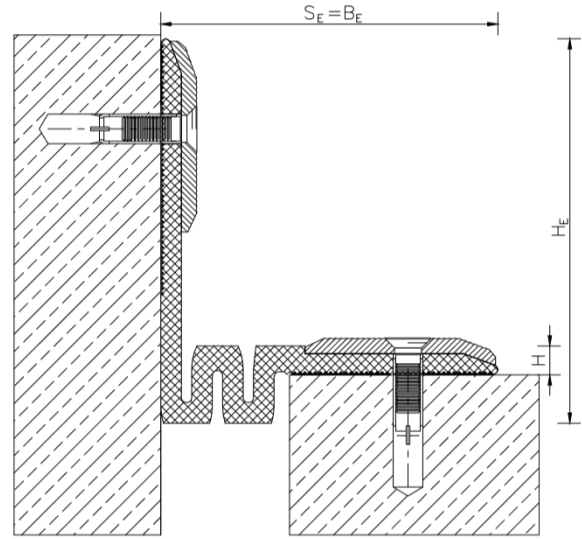
FLAT VERSION



DEFLEX 505-020



DEFLEX 505-050

CORNER VERSION (DEFLEX E)

DEFLEX E 505-020

DEFLEX E 505-050

This data sheet has been developed by FORBUILD SA and remains the property of the company.

2020.05.19/135

Reprinting, copying and sharing data sheet in whole or in part to persons to whom it is not addressed, without the written permission of FORBUILD SA is prohibited. Legal basis - Journal of Laws No. 24/1994 item 83 with later amendments. Act on copyright and related rights.