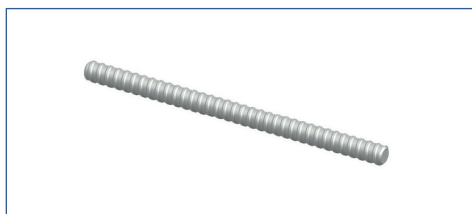
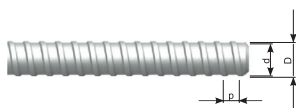


Formwork accessories

Forbuild offers wide range of necessary formwork accessories compatible with most of formwork systems. Our offer includes formwork accessories for wall formworks and ceiling formworks, single side anchors and permanent shatering.

Tie rod B

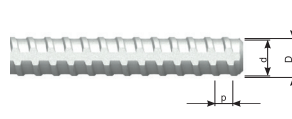
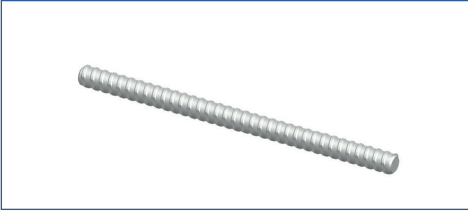


Symbol	Outer diameter D [mm]	Core diameter d [mm]	Lead p [mm]	Useful load [kN]	Breaking force [kN]
B15	17,0	15,0	10,0	90	150
B20	22,0	20,0	10,0	150	260
B26,5	30,0	26,5	13,0	240	465

Symbol	Thread type	Length* [m]	Package [pcs]	Sale unit	Weight [kg/m]	Article no.
Tie rod B15	B15	6,00*	1	m	1,55	AS-DK-SC-1-00759
Tie rod B20	B20	6,00*	1	m	2,60	AS-DK-SC-1-00760
Tie rod B26,5	B26,5	6,00*	1	m	4,60	AS-DK-SC-1-00762

* We offer possibility to purchase different lengths

Tie rod SGS



Symbol	Outer diameter D [mm]	Core diameter d [mm]	Lead p [mm]	Useful load [kN]	Breaking force [kN]
SGS 15	17,0	15,0	10,0	90	175
SGS 20	22,0	20,0	10,0	160	340

Symbol	Thread type	Length [m]	Package [pcs]	Sale unit	Weight [kg/m]	Article no.
Tie rod SGS 15	SGS 15	6,00*	1	pcs	1,440	AS-DK-SC-0-00763
Tie rod SGS 20	SGS 20	6,00*	1	pcs	2,500	AS-DK-SC-0-05271

* We offer possibility to purchase different lengths

Seal for pipes ActiveRing

Seal made of swelling TPE material. It shows good sealing properties for liquids with pressure up to 0,8 MPa.

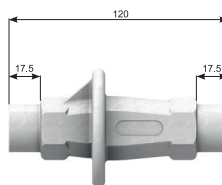
Active Ring mini - for plastic pipes with diameter 25 - 32 mm

Active Ring maxi - for concrete pipes with diameter 38 - 42mm



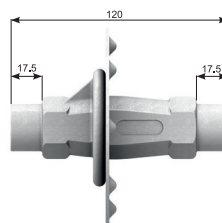
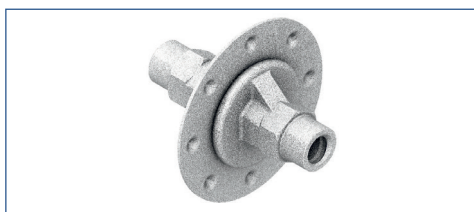
Symbol	Diameter		Package bag [pcs]	Sale unit	Weight [kg/bag]	Article no.
	inner [mm]	outer [mm]				
Seal for pipes ActiveRing mini	24	34	250	bag	1,75	SU-TP-FX-51442
Seal for pipes ActiveRing maxi	35	45	250	bag	2,50	SU-TP-FX-51443

Water barrier D65



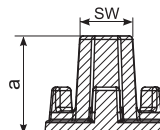
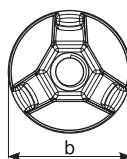
Symbol	Thread type	Diameter [mm]	Package [pcs]	Sale unit	Weight [kg/pcs]	Article no.
Water barrier D65	B15/SGS15	65	1	pcs	0,525	AS-DK-SC-0-00742

Water barrier D110 OS



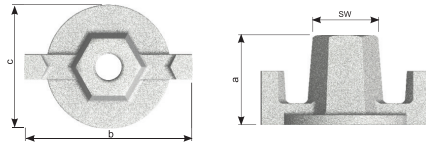
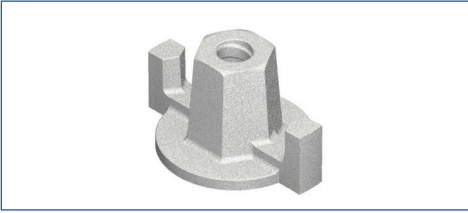
Symbol	Thread type	Diameter [mm]	Package [pcs]	Sale unit	Weight [kg/pcs]	Article no.
Water barrier D110 OS	B15/SGS15	110	1	pcs	0,700	AS-DK-SC-1-00740

Plate nut D65/3



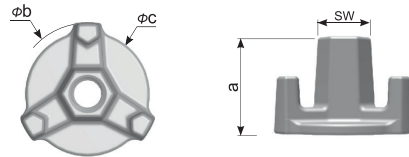
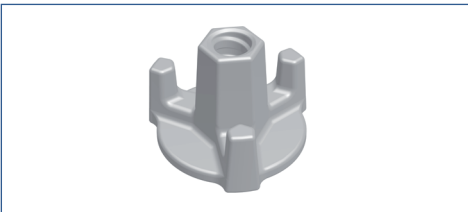
Symbol	Thread type	Dimensions a x b [mm]	SW [mm]	Package bag [pcs]	Sale unit	Weight [kg/pcs]	Article no.
Plate nut D65/3	B15	53 x 65	27	100	pcs	0,360	AS-DK-SC-1-60627

Plate nut D70



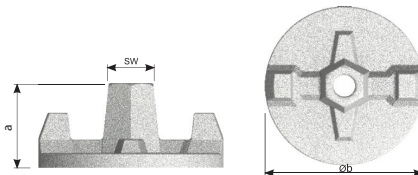
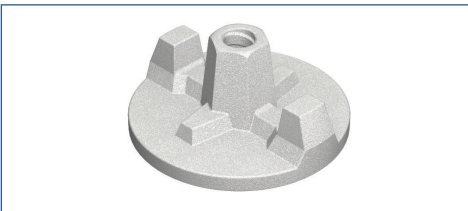
Symbol	Thread type	Dimensions a x b x c [mm]	SW [mm]	Package bag [pcs]	Sale unit	Weight [kg/pcs]	Article no.
Plate nut D70	B15	50 x 95 x 70	27	50	pcs	0,470	AS-DK-SC-1-00086

Plate nut D70/3



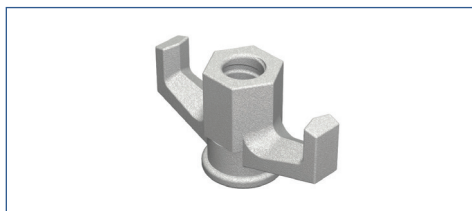
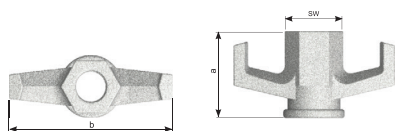
Symbol	Thread type	Dimensions a x b x c [mm]	SW [mm]	Package bag [pcs]	Sale unit	Weight [kg/pcs]	Article no.
Plate nut D70/3	B15	53 x 80,5 x 70	27	50	pcs	0,444	AS-DK-SC-4-38141

Plate nut D100



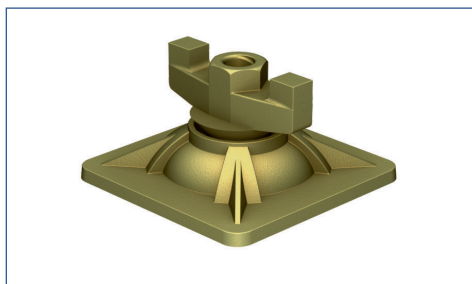
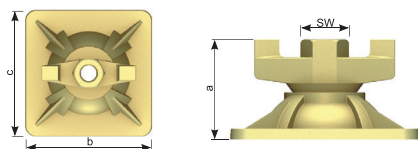
Symbol	Thread type	Dimensions a x b [mm]	SW [mm]	Package bag [pcs]	Sale unit	Weight [kg/pcs]	Article no.
Plate nut D100	B15	50 x 100	27	25	pcs	0,635	AS-DK-SC-1-00085

Butterfly nut



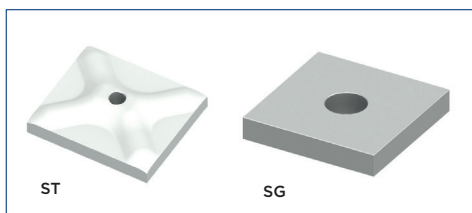
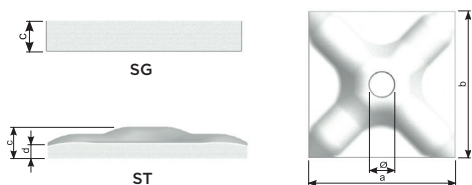
Symbol	Thread type	Dimensions a x b [mm]	SW [mm]	Package bag [pcs]	Sale unit	Weight [kg/pcs]	Article no.
Butterfly nut B15	B15	55 x 85	27	100	pcs	0,310	AS-DK-SC-1-00079
Butterfly nut B20	B20	60 x 110	36	50	pcs	0,495	AS-DK-SC-1-00080

Articulated nut KP



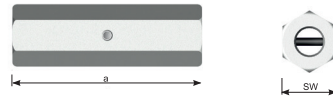
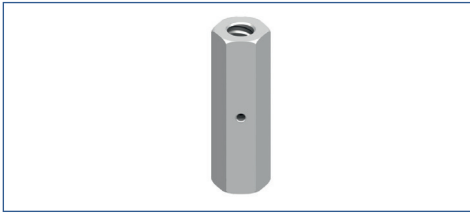
Symbol	Thread type	Dimensions a x b x c [mm]	SW [mm]	Package [pcs]	Sale unit	Weight [kg/pcs]	Article no.
Articulated nut KP-S B15	B15	120 x 120 x 66	27	1	pcs	1,26	AS-DK-SC-1-00081

Steel pad ST i SG



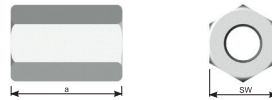
Symbol	Hole diameter Ø [mm]	Dimensions a x b x c x d [mm]	Package [pcs]	Sale unit	Weight [kg/pcs]	Article no.
Steel pad ST 20	20	120 x 120 x 20 x 10	1	pcs	1,10	AS-DK-SC-0-00733
Steel pad ST 25	25	120 x 120 x 20 x 10	1	pcs	1,00	AS-DK-SC-0-00734
Steel pad SG 25	25	120 x 120 x 20	1	pcs	2,19	AS-DK-SC-0-00735
Steel pad SG 34	34	120 x 120 x 20	1	pcs	2,12	AS-DK-SC-0-00736

Hexagonal connecting nut



Symbol	Thread type	Length a [mm]	SW [mm]	Package bag [pcs]	Sale unit	Weight [kg/pcs]	Article no.
Hexagonal connecting nut B15 L=105 mm	B15	105	30	50	pcs	0,445	AS-DK-SC-0-00084
Hexagonal connecting nut B20 L=110 mm	B20	110	36	50	pcs	0,650	AS-DK-SC-0-00728
Hexagonal connecting nut B26,5 L=150 mm	B26,5	150	46	10	pcs	1,400	AS-DK-SC-0-00729

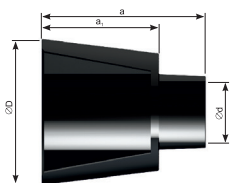
Hexagonal nut



Symbol	Thread type	Length a [mm]	SW [mm]	Package bag [pcs]	Sale unit	Weight [kg/pcs]	Article no.
Hexagonal nut B15 L=90 mm	B15	90	30	50	pcs	0,385	AS-DK-SC-0-08820
Hexagonal nut B15 L=70 mm	B15	70	30	50	pcs	0,300	AS-DK-SC-0-00720
Hexagonal nut B15 L=50 mm	B15	50	30	100	pcs	0,215	AS-DK-SC-0-00719
Hexagonal nut B15 L=25 mm*	B15	25	30	250	pcs	0,100	AS-DK-SC-0-00716
Hexagonal nut B20 L=60 mm	B20	60	36	50	pcs	0,500	AS-DK-SC-0-00722
Hexagonal nut B26,5 L=80 mm	B26,5	80	46	25	pcs	0,800	AS-DK-SC-0-00727

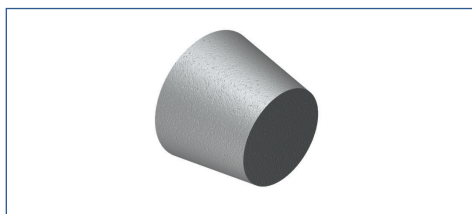
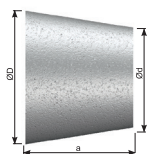
* To use only as a lock nut

Plastic cone EX type 03



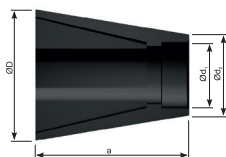
Symbol	Concrete cover [mm]	Dimensions [mm]				Package carton [pcs]	Sale unit	Weight [kg/carton]	Article no.
		a	a ₁	ØD	Ød				
Plastic cone EX 22/50 type 03	50	70	50	62	26	120	bag	3,650	AS-DK-SC-0-00758

Concrete plug EX type 03



Symbol	Dimensions [mm]			Package carton [pcs]	Sale unit	Weight [kg/carton]	Article no.
	a	ØD	Ød				
Concrete plug EX type 03	45	60	50	75	carton	16,500	AS-DK-SC-0-23460

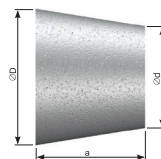
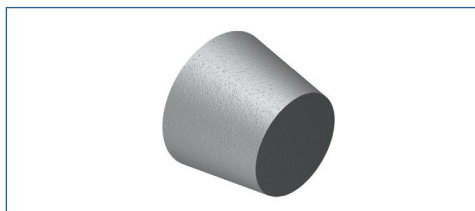
Plastic cone EX type 04



Symbol	Dimensions [mm]				Concrete cover [mm]	Package bag [pcs]	Sale unit	Weight [kg/bag]	Article no.
	a	Ød ₁	Ød ₂	ØD					
Plastic cone EX 22/50 type 04	62	26	34	53	50	250	bag	7,750	AS-DK-SC-0-00753
Plastic cone EX 26/50 type 04	62	30	36	52	50	250	bag	7,850	AS-DK-SC-0-00755

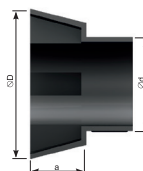
It is put on K-22 or K-26 plastic pipe.

Concrete plug EX type 04



Symbol	Dimensions [mm]			Package carton [pcs]	Sale unit	Weight [kg/carton]	Article no.
	a	ØD	Ød				
Concrete plug EX type 04	35	50	39	120	carton	13,000	AS-DK-SC-0-23462

Plastic cone EX type 01 and 05

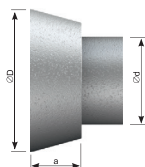


Symbol	Dimensions [mm]				Package bag [pcs]	Sale unit	Weight [kg/bag]	Article no.
	a	Ød	ØD	Concrete cover [mm]				
Plastic cone EX 22/10 type 01	10	22	43	10	500	bag	2,600	AS-DK-SC-0-00751
Plastic cone EX 22/15 type 01	15	22	43	15	500	bag	4,000	AS-DK-SC-0-00752
Plastic cone EX 26/10 type 05	10	26	48	10	250	bag	1,500	AS-DK-SC-0-00754
Plastic cone EX 32/10 type 05	10	32	48	10	250	bag	2,000	AS-DK-SC-0-00756
Plastic cone EX 22/10U type 01*	10	22	43	10	250	bag	2,700	AS-DK-SC-0-23748



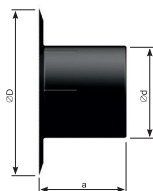
* Plastic cone with seal EX 22/10U type 01

Concrete plug EX type 01 and 05



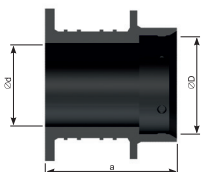
Symbol	Dimensions [mm]			Package carton [pcs]	Sale unit	Weight [kg/carton]	Article no.
	a	Ød	ØD				
Concrete plug EX type 01	7	20	39	100	carton	2,700	AS-DK-SC-0-27018
Concrete plug EX type 05	12	22	45,5	50	carton	2,150	AS-DK-SC-0-27058

Plastic plug EX 22



Symbol	Dimensions [mm]			Package bag [pcs]	Sale unit	Weight [kg/bag]	Article no.
	a	Ød	ØD				
Plastic plug EX 22	22	22	31	250	bag	0,750	AS-DK-SC-0-00681

Plastic end IN



Symbol	Dimensions [mm]			Concrete cover [mm]	Package bag [pcs]	Sale unit	Weight [kg/bag]	Article no.
	a	ØD	Ød					
Plastic end IN 22	35	26	22	25	500	bag	1,500	AS-DK-SC-0-00671
Plastic end IN 26	34	29	26	25	250	bag	3,000	AS-DK-SC-0-00672
Plastic end IN 32	39	36	32	30	250	bag	3,250	AS-DK-SC-0-00673

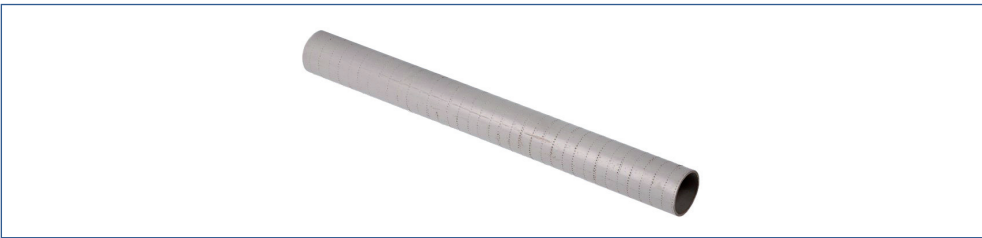
Water barrier reduction 22/26



Symbol	Package [pcs]	Sale unit	Weight [kg/pcs]	Article no.
Water barrier reduction 22/26	250	pcs	0,060	AS-DK-SC-0-00664

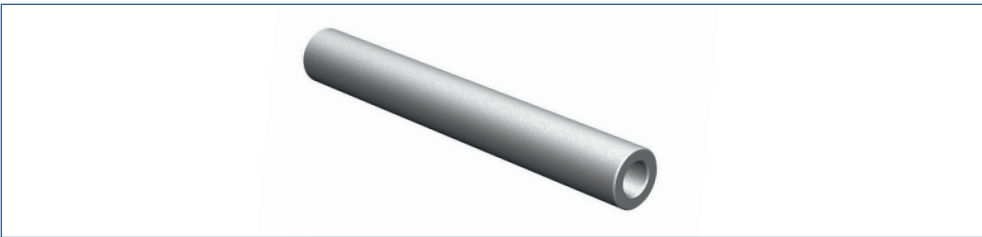
For connection of plastic pipe K22 with water barriers available in Forbuild system.

Plastic pipe K



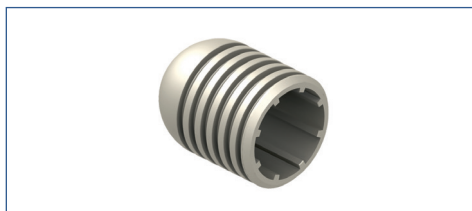
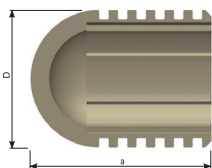
Symbol	Diameter inner/zew [mm]	Length [mm]	Package bunch [m]	Sale unit	Weight [kg/m]	Article no.
K-22/25	22/25	2000	100	bunch	0,210	AS-DK-SC-0-00745
K-22/26	22/26	2000	100	bunch	0,215	AS-DK-SC-0-00746
K-26	26/30	2000	50	bunch	0,240	AS-DK-SC-0-00749
K-32	32/36	2000	50	bunch	0,285	AS-DK-SC-0-00750

Concrete pipe FB



Symbol	Diameter wew/zew [mm]	Length [mm]	Package pallet [m]	Sale unit	Weight [kg/m]	Article no.
Concrete pipe FB 22/40	22/40	1250	500	pallet	2,200	AS-DK-SC-0-00670

Rubber plug FLUPP



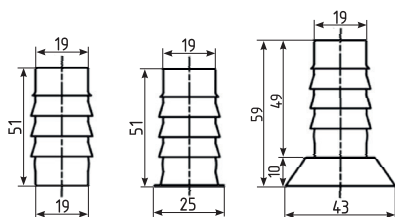
Symbol	Dimensions [mm]		Package bag [pcs]	Sale unit	Weight [kg/bag]	Article no.
	a	øD				
Rubber plug FLUPP 20	28	24	500	bag	2,750	AS-DK-SC-0-00685
Rubber plug FLUPP 22	33	28	500	bag	5,000	AS-DK-SC-0-00686
Rubber plug FLUPP 26	30	30	250	bag	3,000	AS-DK-SC-0-00687
Rubber plug FLUPP 32	37	36	125	bag	2,500	AS-DK-SC-0-00688

Device for FLUPP plugs pressing



Symbol	Package [pcs]	Sale unit	Weight [kg/pcs]	Article no.
Device for FLUPP plugs pressing	1	pcs	0,170	AS-DK-SC-0-00744

Plastic plug STOPPER

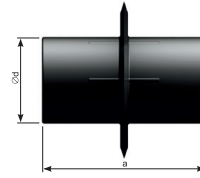


STOPPER in 22 STOPPER mini 22 STOPPER maxi 22



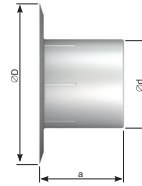
Symbol	Package container [pcs]	Sale unit	Weight [kg/container]	Article no.
Plastic plug STOPPER in 22	250	container	6,0	AS-DK-SC-0-51420
Plastic plug STOPPER mini 22	250	container	6,0	AS-DK-SC-0-51421
Plastic plug STOPPER maxi 22	250	container	9,0	AS-DK-SC-0-51422

Connector for plastic pipes D22



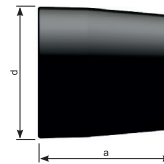
Symbol	Dimensions [mm]		Package bag [pcs]	Sale unit	Weight [kg/bag]	Article no.
	a	d				
Connector for plastic pipes D22	48	22	250	bag	1,250	AS-DK-SC-0-00772

Distance pipe seal FB



Symbol	Dimensions [mm]			Package bag [pcs]	Sale unit	Weight [kg/bag]	Article no.
	a	ød	øD				
Distance pipe seal FB	26	22	36	500	bag	1,000	AS-DK-SC-0-00769

Plastic plug STOPF



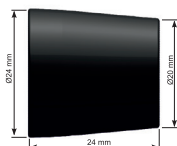
Symbol	Dimensions [mm]		Package bag [pcs]	Sale unit	Weight [kg/bag]	Article no.
	a	d				
Plastic plug STOPF 20	16	20	1000	bag	2,000	AS-DK-SC-0-00690
Plastic plug STOPF 22	18	22	1000	bag	2,500	AS-DK-SC-0-00691
Plastic plug STOPF 26	27	26	1000	bag	6,000	AS-DK-SC-0-00692
Plastic plug STOPF 32	16	32	1000	bag	4,000	AS-DK-SC-0-00693

Device for seal pulling out



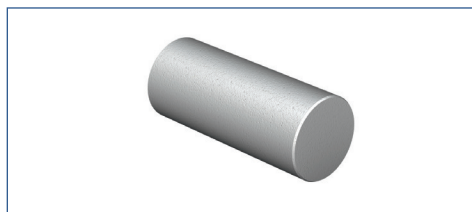
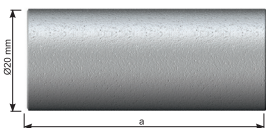
Symbol	Package [pcs]	Sale unit	Weight [kg/pcs]	Article no.
Device for seal pulling out	1	pcs	0,100	AS-DK-SC-0-05781

PVC plug for distance concrete pipe FB



Symbol	Package bag [pcs]	Sale unit	Weight [kg/bag]	Article no.
KPVC plug for distance concrete pipe FB	500	bag	1,500	AS-DK-SC-0-08224

Concrete plug FB



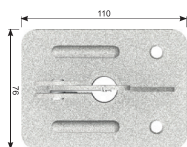
Symbol	Diameter [mm]	Length a [mm]	Package bag [pcs]	Sale unit	Weight [kg/bag]	Article no.
Concrete plug FB 22 L=20 mm	20	20	500	bag	6,500	AS-DK-SC-0-38024
Concrete plug FB 22 L=20 mm	20	20	1000	bag	13,000	AS-DK-SC-0-00665
Concrete plug FB 22 L=50 mm	20	50	500	bag	16,500	AS-DK-SC-0-00666

Device for plugs pressing FB



Symbol	Package [pcs]	Sale unit	Weight [kg/pcs]	Article no.
Device for plugs pressing FB 22 L=20 mm	1	pcs	0,450	AS-DK-SC-0-05782
Device for plugs pressing FB 22 L=50 mm	1	pcs	0,500	AS-DK-SC-0-00770

Wire grip



Symbol	Package [pcs]	Sale unit	Weight [kg/pcs]	Article no.
Wire grip	25	pcs	0,375	AS-DK-SC-0-00767

Tension wrench



Symbol	Package [pcs]	Sale unit	Weight [kg/pcs]	Article no.
Tension wrench	1	pcs	3,430	AS-DK-SC-0-00731

Socket wrench FCB



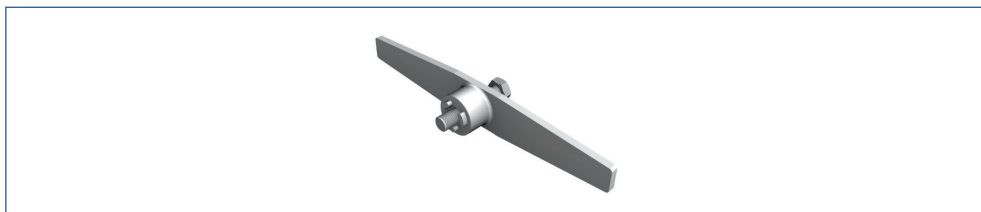
Symbol	SW [mm]	Package [pcs]	Sale unit	Weight [kg/pcs]	Article no.
Socket wrench FCB-15	27	1	pcs	1,150	NA-NA-00-0-04720
Socket wrench FCB-20	32	1	pcs	1,620	NA-NA-00-0-04721

Special wrench for cone FCB



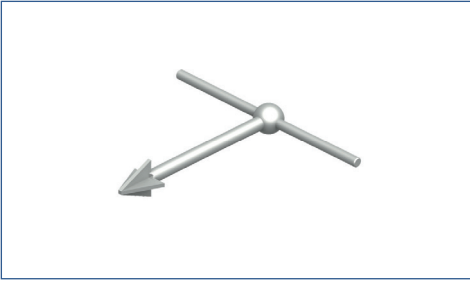
Symbol	SW [mm]	Package [pcs]	Sale unit	Weight [kg/pcs]	Article no.
Special wrench for cone FCB-15	27	1	pcs	2,450	NA-NA-00-0-04724
Special wrench for cone FCB-20	32	1	pcs	2,860	NA-NA-00-0-04725
Special wrench for cone FCB-26,5	46	1	pcs	7,320	NA-NA-00-0-04726

Special wrench FCM-15



Symbol	Package [pcs]	Sale unit	Weight [kg/pcs]	Article no.
Special wrench FCM-15	1	pcs	4,040	NA-NA-00-0-04727

Wrench for screwing EX cones out



Wrench EX



Wrench EX type 03

Symbol	Package [pcs]	Sale unit	Weight [kg/ pcs]	Article no.
Wrench for screwing EX cones out	1	pcs	0,420	NA-NA-00-0-04713
Wrench for screwing EX cones out type 03	1	pcs	0,640	NA-NA-00-0-04714

Wrench for butterfly nuts



Symbol	Package [pcs]	Sale unit	Weight [kg/pcs]	Article no.
Wrench for butterfly nuts	1	pcs	2,500	NA-NA-00-0-04710

Wrench SW



Symbol	SW [mm]	Package [pcs]	Sale unit	Weight [kg/pcs]	Article no.
Wrench SW 24	24	1	pcs	0,500	NA-NA-00-0-04729
Wrench SW 27	27	1	pcs	0,500	NA-NA-00-0-04730
Wrench SW 30	30	1	pcs	0,810	NA-NA-00-0-04731
Wrench SW 36	36	1	pcs	1,270	NA-NA-00-0-04732
Wrench SW 46	46	1	pcs	2,400	NA-NA-00-0-04733

Wrench for tie rods



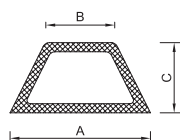
Wrench for B15 tie



Universal wrench for tie rods

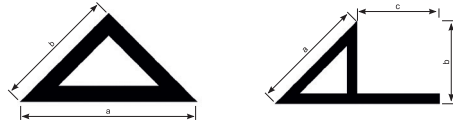
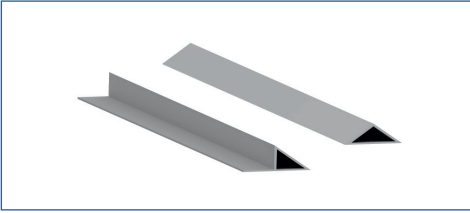
Symbol	Package [pcs]	Sale unit	Weight [kg/pcs]	Article no.
Wrench for B15 tie	1	pcs	1,640	NA-NA-00-0-04715
Universal wrench for tie rods	1	pcs	2,460	NA-NA-00-0-04728

Plastic chamfer batten - trapeze



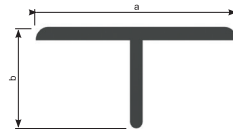
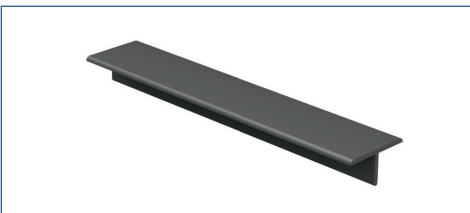
Symbol	Dimensions			Length [mm]	Package bunch/pallet [m]	Sale unit	Weight [kg/100m]	Article no.
	A [mm]	B [mm]	C [mm]					
Plastic chamfer batten trapeze 16/10/20	16	10	20	2500	100/2000	bunch	9,00	AS-DK-SC-4-43306
Plastic chamfer batten trapeze 20/10/10	20	10	10	2500	100/2000	bunch	10,00	AS-DK-SC-4-10083
Plastic chamfer batten trapeze 30/20/15	30	20	15	2500	100/2000	bunch	13,00	AS-DK-SC-4-14409
Plastic chamfer batten trapeze 40/20/10	40	20	10	2500	100/2000	bunch	19,00	AS-DK-SC-4-14679

Plastic batten DREIKA



Symbol	Dimensions			Length [mm]	Package bunch/pallet [m]	Sale unit	Weight [kg/100 m]	Article no.
	a [mm]	b [mm]	c [mm]					
Plastic batten DREIKA L10	14	10	8,5	2500	100/5400	bunch	10,00	AS-DK-SC-0-00703
Plastic batten DREIKA L15	21	15	12,5	2500	100/5500	bunch	15,20	AS-DK-SC-0-00705
Plastic batten DREIKA L20	28	20	15,5	2500	100/4500	bunch	18,00	AS-DK-SC-0-00707
Plastic batten DREIKA L25	35	25	14	2500	50/2450	bunch	25,60	AS-DK-SC-0-00708
Plastic batten DREIKA L30	42	30	14	2500	50/1800	bunch	32,40	AS-DK-SC-0-00709
Plastic batten DREIKA 11/11	16	11	-	2500	100/9000	bunch	3,30	AS-DK-SC-0-00698
Plastic batten DREIKA 15/15	21	15	-	2500	100/5600	bunch	5,70	AS-DK-SC-0-00699
Plastic batten DREIKA 20/20	28	20	-	2500	100/5500	bunch	8,90	AS-DK-SC-0-00700
Plastic batten DREIKA 25/25	35	25	-	2500	100/2700	bunch	10,56	AS-DK-SC-0-00701
Plastic batten DREIKA 30/30	42	30	-	2500	50/2400	bunch	15,98	AS-DK-SC-0-00702

Plastic batten T



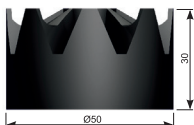
Symbol	Dimensions a x b [mm]	Length [mm]	Package [m/bunch]	Sale unit	Weight [kg/100m]	Article no.
Plastic batten T	40 x 20	2000	100	bunch	16,8	AS-DK-SC-0-00713

Gluing foam in roll



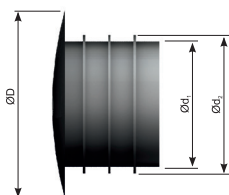
Symbol	Dimensions			Package roll [m]	Sale unit	Weight [kg/roll]	Article no.
	thickness [mm]	width [mm]	length [m]				
Gluing foam in roll 19x6 mm L=10 m	6	19	10	10	roll	0,095	AS-DK-SC-0-43233

Ring - Center



Symbol	Package bag [pcs]	Sale unit	Weight [kg/bag]	Article no.
Ring - Center	500	pcs	7,500	AS-DK-SC-0-00662

Plastic plug for formworks



Symbol	Dimensions			Package bag [pcs]	Sale unit	Weight [kg/bag]	Article no.
	d ₁	d ₂	D				
Plastic plug for formworks D18	16	20	24	250	pcs	0,500	AS-DK-SC-0-00677
Plastic plug for formworks D22	20	24	27	250	pcs	0,625	AS-DK-SC-0-00678
Plastic plug for formworks D22 type 2	20	24	34	500	pcs	2,000	AS-DK-SC-0-00679

Crosshead



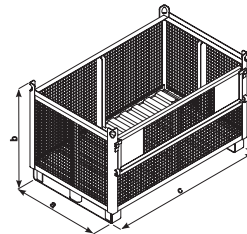
Symbol	Package [pcs]	Sale unit	Weight [kg/pcs]	Article no.
Crosshead	1	pcs	2,50	SS-XX-00-0-01934

Stabilizing tripod



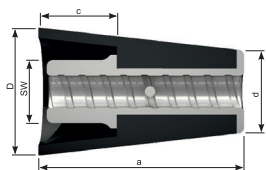
Symbol	Package [pcs]	Sale unit	Weight [kg/pcs]	Article no.
Stabilizing tripod	1	pcs	8	SS-ST-00-0-01940

Transportation container



Symbol	Dimensions			Package [pcs]	Sale unit	Weight [kg/pcs]	Weight with max. load [kg]	Article no.
	a	b	c					
Transportation container type A	800	800	1200	1	pcs	74,0	1200	SB-TW-MT-0-05979
Transportation container type F (mesh container)	1100	1150	1200	1	pcs	105,0	605	SB-TW-MT-0-05811

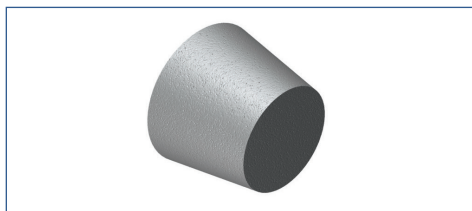
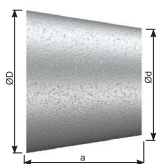
Plastic metal cone - FCB



Dimensions of cone	a [mm]	D [mm]	d [mm]	c [mm]	SW [mm]	Type of closing plug
FCB-15	95	61	40	50	27	Concrete plug EX type 03
FCB-20	126	70	42	65	32	Concrete plug EX type 13
FCB-26,5	135	103	57	70	46	Concrete plug EX type 18

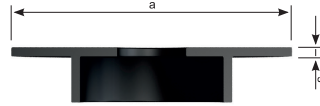
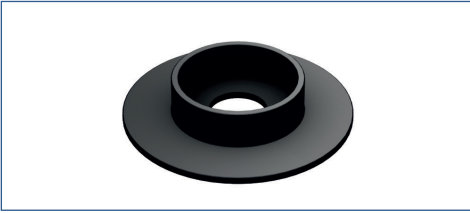
Symbol	Thread type	Package bag [pcs]	Sale unit	Weight [kg/pcs]	Article no.
Plastic metal cone FCB-15	B15	25	pcs	0,500	AS-ZJ-00-0-00852
Plastic metal cone FCB-20	B20	25	pcs	0,800	AS-ZJ-00-0-00853
Plastic metal cone FCB-26,5	B26,5	10	pcs	1,670	AS-ZJ-00-0-00854

Concrete plug EX



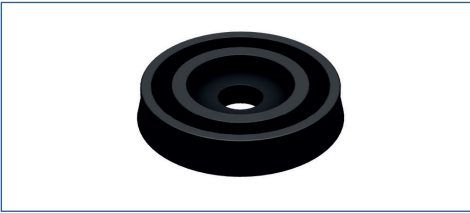
Symbol	Dimensions			Package carton [pcs]	Sale unit	Weight [kg/carton]	Article no.
	a [mm]	ØD [mm]	Ød [mm]				
Concrete plug EX type 03	45	60	50	75	carton	16,500	AS-DK-SC-0-23460
Concrete plug EX type 13	53	68	56	60	carton	16,600	AS-DK-SC-0-28106
Concrete plug EX type 18	60	102	60	25	carton	17,500	AS-DK-SC-0-00676

Plug FCB



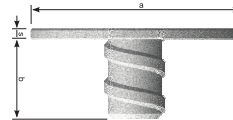
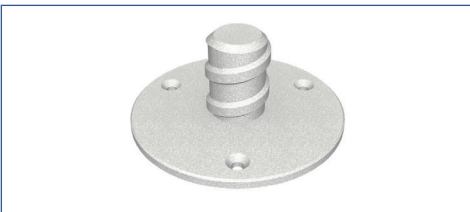
Symbol	Dimensions a x s [mm]	Package bag [pcs]	Sale unit	Weight [kg/pcs]	Article no.
Plug FCB-15	63 x 2	50	bag	0,004	AS-ZJ-00-0-00873
Plug FCB-20	68 x 2	50	bag	0,006	AS-ZJ-00-0-00874
Plug FCB-26,5	103 x 2	50	bag	0,011	AS-ZJ-00-0-00875

Cone seal FCB-15



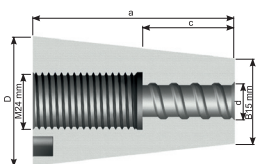
Symbol	Package bag [pcs]	Sale unit	Weight [kg/pcs]	Article no.
Cone seal FCB-15	25	bag	0,053	AS-ZJ-00-0-00849

Nailing grip FCB



Symbol	Thread type	Dimensions a x b x s [mm]	Package [pcs]	Sale unit	Weight [kg/pcs]	Article no.
Nailing grip FCB-15	B15	60 x 24 x 3	1	pcs	0,100	AS-ZJ-00-0-00862
Nailing grip FCB-20	B20	80 x 24 x 3	1	pcs	0,140	AS-ZJ-00-0-00861
Nailing grip FCB-26,5	B26,5	100 x 27 x 3	1	pcs	0,200	AS-ZJ-00-0-00863

Metal cone FCM



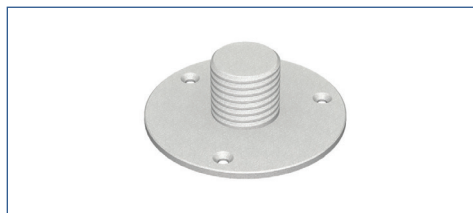
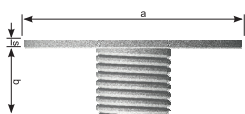
screw M24



Dimensions of cone	a [mm]	D [mm]	d [mm]	c [mm]	Type of closing plug
FCM-24/15	95	61	40	45	Concrete plug EX type 03

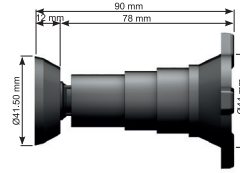
Symbol	Package [pcs]	Sale unit	Weight [kg]	Article no.
Metal cone FCM-24/15	1	pcs	1,200/pcs	AS-ZJ-00-0-00858
Screw M24 L=55 mm	1	pcs	0,320/pcs	AS-ZJ-00-0-00859
Concrete plug EX type 03	75	carton	16,500/carton	AS-DK-SC-0-23460

Nailing grip FCM



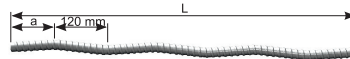
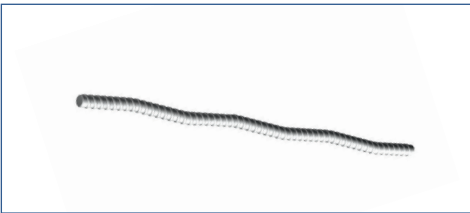
Symbol	Thread type	Dimensions a x b x s [mm]	Package [pcs]	Sale unit	Weight [kg/pcs]	Article no.
Nailing grip FCM-24 L=25 mm	M24	80 x 25 x 3	1	pcs	0,160	AS-ZJ-00-0-00865

Mounting element FORBOLD-C



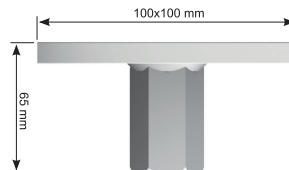
Symbol	Package bag [pcs]	Sale unit	Weight [kg/pcs]	Article no.
Casing anchor FORBOLD-C	50	pcs	2,500	AS-ZJ-00-0-00836
Plug FORBOLD-C	50	pcs	0,350	AS-ZJ-00-0-00837

Wavy anchor



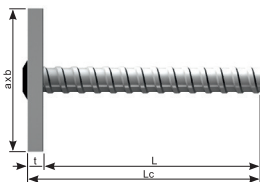
Symbol	Thread type	Dimensions		Package [pcs]	Sale unit	Weight [kg/pcs]	Article no.
		L [mm]	a [mm]				
Wavy anchor B15	B15	550	95	1	pcs	0,852	AS-ZJ-00-1-00180
Wavy anchor B20	B20	700	170	1	pcs	1,820	AS-ZJ-00-1-00181
Wavy anchor B26,5	B26,5	800	220	1	pcs	4,600	AS-ZJ-00-1-00182

Anchoring element B20



Symbol	Package [pcs]	Sale unit	Weight [kg/pcs]	Article no.
Anchoring element B20	1	pcs	1,480	AS-ZJ-00-0-00840

Anchor with plate

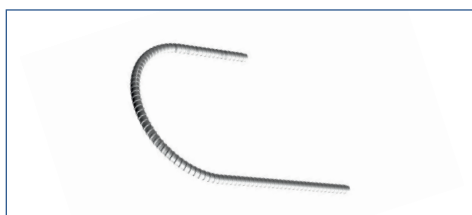
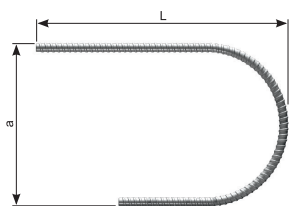


Dimensions of anchor	a x b [mm]	t [mm]	L _c [mm]	L [mm]	Vt [mm]
B15 L= 100 mm	90 x 120	10	120	100	150
B15 L= 160 mm	90 x 120	10	180	160	210
B15 L= 400 mm	90 x 120	10	420	400	450
B20 L= 160 mm	100x130	10	185	160	215
B20 L= 280 mm	100x130	10	300	280	330

Vt - minimum anchorage depth

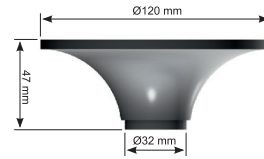
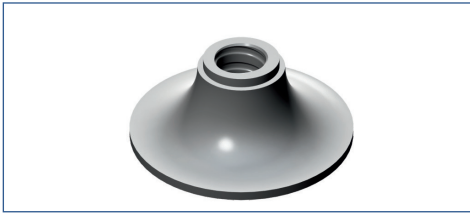
Symbol	Thread type	Package [pcs]	Sale unit	Weight [kg/pcs]	Article no.
Anchor with plate B15 L= 100 mm	B15	1	pcs	0,970	AS-ZJ-00-1-00846
Anchor with plate B15 L= 160 mm	B15	1	pcs	1,070	AS-ZJ-00-1-00847
Anchor with plate B15 L= 400 mm	B15	1	pcs	1,450	AS-ZJ-00-1-00848
Anchor with plate B20 L= 160 mm	B20	1	pcs	1,500	AS-ZJ-00-0-19748
Anchor with plate B20 L= 280 mm	B20	1	pcs	1,900	AS-ZJ-00-1-00845

Hook anchor



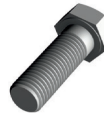
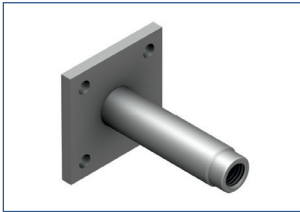
Symbol	Thread type	Dimensions		Package [pcs]	Sale unit	Weight [kg/pcs]	Article no.
		L [mm]	a [mm]				
Hook anchor B15 L=250 mm	B15	250	150	1	pcs	0,670	AS-ZJ-00-1-00183
Hook anchor B15 L=450 mm	B15	450	150	1	pcs	0,980	AS-ZJ-00-1-00184
Hook anchor B20 L=500 mm	B20	500	190	1	pcs	2,250	AS-ZJ-00-1-00185
Hook anchor B26,5 L=650 mm	B26,5	650	250	1	pcs	4,630	AS-ZJ-00-1-00186

Anchoring element B26,5

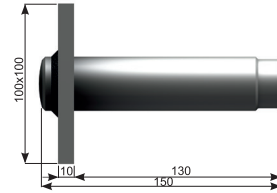


Symbol	Package [pcs]	Sale unit	Weight [kg/pcs]	Article no.
Anchoring element B26,5	1	pcs	1,320	AS-ZJ-00-0-00841

Anchoring element M24

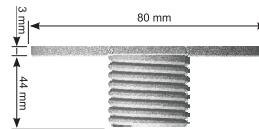
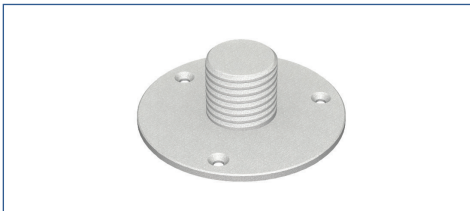


screw M24



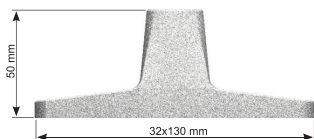
Symbol	Thread type	Package [pcs]	Sale unit	Weight [kg/pcs]	Article no.
Anchoring element M24	M24	1	pcs	1,300	AS-ZJ-00-0-00842
Screw M24 L=70 mm	M24	1	pcs	0,350	AS-ZJ-00-0-00860

Nailing grip M24



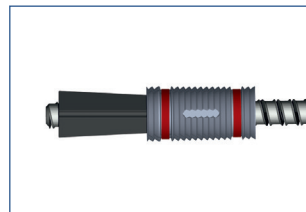
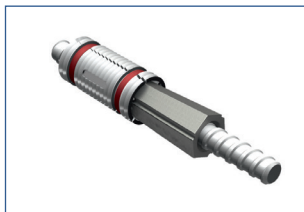
Symbol	Thread type	Package [pcs]	Sale unit	Weight [kg/pcs]	Article no.
Nailing grip M24 L=45 mm	M24	1	pcs	0,230	AS-ZJ-00-0-00866

Grip FORBOLD-F



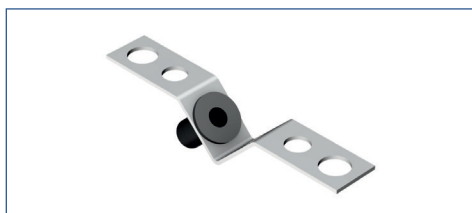
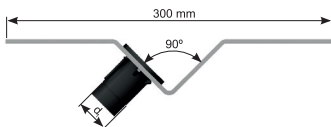
Symbol	Thread type	Package [pcs]	Sale unit	Weight [kg/pcs]	Article no.
Grip FORBOLD-F	B15	1	pcs	0,370	AS-ZJ-00-0-00867

Anchor B15



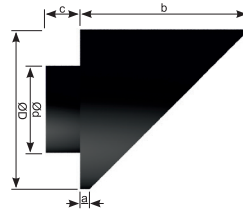
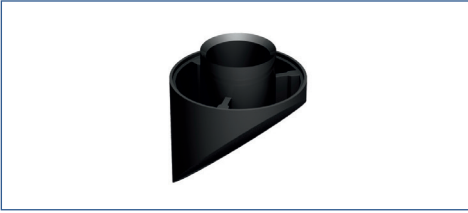
Symbol	Package [pcs]	Sale unit	Weight [kg/pcs]	Article no.
Anchor B15	50	pcs	0,275	AS-ZJ-00-0-00843

Grip V



Symbol	Thread type	Outer diameter d_1 [mm]	Package [pcs]	Sale unit	Weight [kg/pcs]	Article no.
Grip V B15	B15	25	1	pcs	0,420	AS-ZJ-00-0-00868
Grip V B20	B20	32	1	pcs	0,420	AS-ZJ-00-0-00869
Grip V B26,5	B26,5	40	1	pcs	0,420	AS-ZJ-00-0-00870

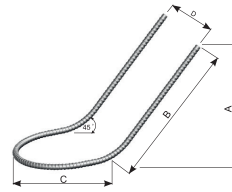
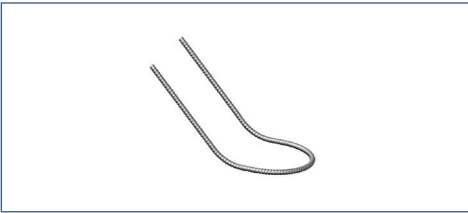
Cone plug FCB



Thread type	a [mm]	b [mm]	c [mm]	d [mm]	D [mm]
B15	5	70	14	30	65

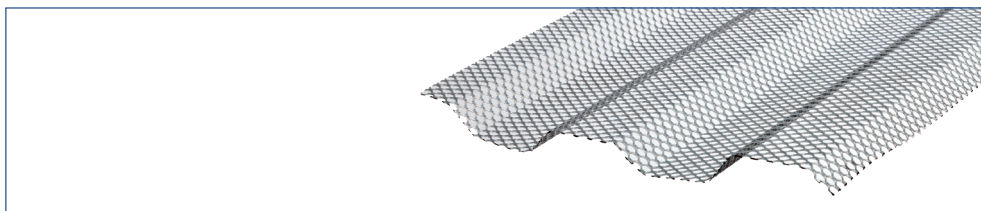
Symbol	Package [pcs]	Sale unit	Weight [kg/pcs]	Article no.
Cone plug FCB 45/B15	1	pcs	0,420	AS-ZJ-00-0-00872

Anchoring loop



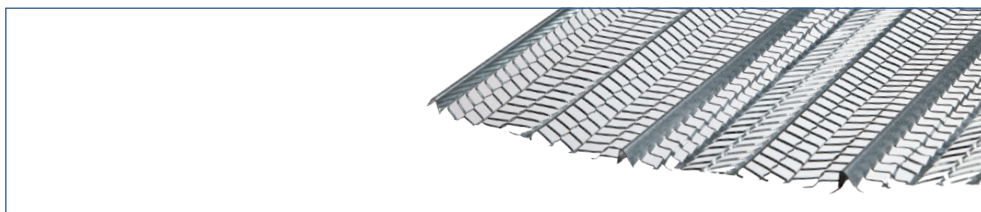
Symbol	Thread type	Dimensions				Breaking force [kN]	Calculation value per 1 rod [kN]	Package [pcs]	Sale unit	Weight [kg/pcs]	Article no.
		A	B	C	D						
Anchoring loop B15	B15	285	400	302	224	160	85	1	pcs	2,350	AS-ZJ-00-1-00187
Anchoring loop B20	B20	325	440	300	280	300	150	1	pcs	4,100	AS-ZJ-00-1-00188
Anchoring loop B26,5	B26,5	370	485	455	300	520	245	1	pcs	8,800	AS-ZJ-00-1-00189

Permanent shuttering STP



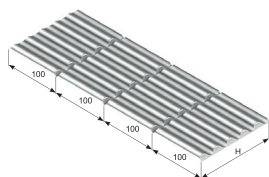
Symbol	Thickness [mm]	Dimensions		Package bunch [pcs]	Sale unit	Weight [kg/pcs]	Article no.
		width b [m]	length l [m]				
STP h = 1200 mm l = 2250	0,7	1,20	2,25	20	pcs	6,02	AS-TR-PR-1-00178
STP h = 1000 mm l = 2250	0,7	1,00	2,25	20	pcs	5,02	AS-TR-PR-1-00177

Permanent shuttering STC



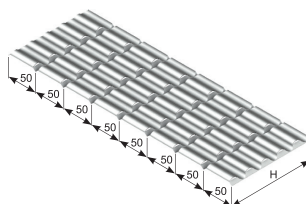
Symbol	Thickness [mm]	Dimensions		Package bunch [pcs]	Sale unit	Weight [kg/pcs]	Article no.
		width b [m]	length l [m]				
STC 0,25	0,25	0,60	2,50	20	pcs	1,32	AS-TR-PR-0-55482
STC 0,30	0,30	0,60	2,50	20	pcs	1,35	AS-TR-PR-0-00821
STC 0,45	0,45	0,60	2,50	20	pcs	2,60	AS-TR-PR-0-00822

System VARIO 100



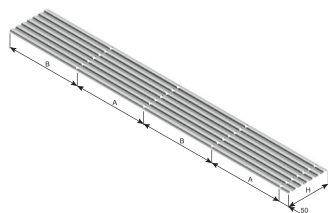
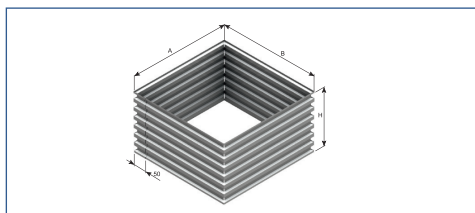
Symbol	Height H [mm]	Length L [mm]	Sale unit	Package [roll/pallet]	Weight [kg/roll]	Article no.
AS 600	600	4000	roll	18	11,28	AS-TR-KT-0-20156
AS 700	700	4000	roll	12	13,16	AS-TR-KT-0-20157
AS 800	800	4000	roll	12	15,04	AS-TR-KT-0-20158
AS 900	900	4000	roll	12	16,92	AS-TR-KT-0-20159

System VARIO 50 (with underseal)



Symbol	Height H [mm]	Length L [mm]	Sale unit	Package [roll/pallet]	Weight [kg/roll]	Article no.
AS 140	140	6000	roll	60	3,23	AS-TR-KT-0-20137
AS 180	180	6000	roll	48	4,15	AS-TR-KT-0-20138
AS 192	192	6000	roll	48	4,42	AS-TR-KT-0-20139
AS 210	210	6000	roll	42	4,84	AS-TR-KT-0-20140
AS 220	220	6000	roll	42	5,10	AS-TR-KT-0-20141
AS 235	235	6000	roll	42	5,41	AS-TR-KT-0-20142
AS 250	250	6000	roll	42	5,76	AS-TR-KT-0-20143
AS 260	260	6000	roll	36	6,00	AS-TR-KT-0-20144
AS 277	277	6000	roll	36	6,40	AS-TR-KT-0-20145
AS 305	305	6000	roll	36	7,03	AS-TR-KT-0-20146
AS 330	330	6000	roll	30	7,60	AS-TR-KT-0-20147
AS 355	355	6000	roll	30	8,18	AS-TR-KT-0-20148
AS 385	385	6000	roll	24	8,87	AS-TR-KT-0-20149
AS 415	415	6000	roll	24	9,56	AS-TR-KT-0-20150
AS 440	440	6000	roll	24	10,14	AS-TR-KT-0-20151
AS 470	470	6000	roll	18	10,83	AS-TR-KT-0-20152
AS 500	500	6000	roll	18	11,52	AS-TR-KT-0-20153
AS 525	525	6000	roll	18	12,10	AS-TR-KT-0-20154
AS 550	550	6000	roll	18	12,67	AS-TR-KT-0-20155

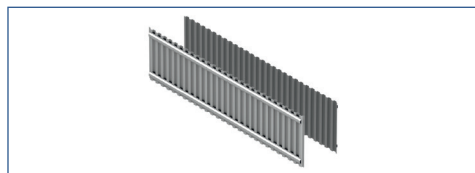
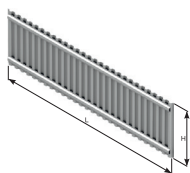
Formwork FKF and FKVF



Symbol	Thickness of plate [mm]	Height H [mm]	Length A [mm]	Sale unit	Package [m/pallet]	Weight [kg/m ²]	Article no.
FKF	0,50	max 1000	max 8000	m	80	3,60	-
FKVF	0,75	max 1000	max 8000	m	80	4,60	-

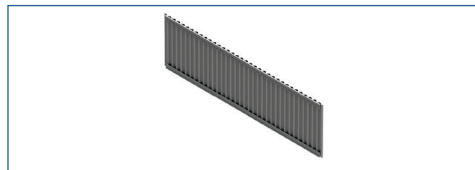
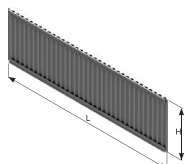
Comment: products on request, it is necessary to give dimensions A, B, H

System FS 2001



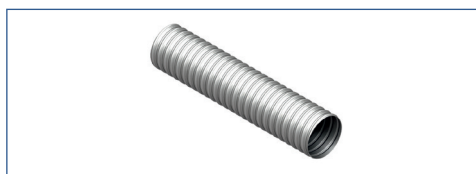
Symbol	Height H [mm]	Length L [mm]	Sale unit	Package [pcs/pallet]	Weight [kg/m ²]	Article no.
FS 2001	500 - 1000	3100	pcs	20	8	-
FS 2001 G	500 - 1000	3100	pcs	20	14	-

System FS 2001 light type



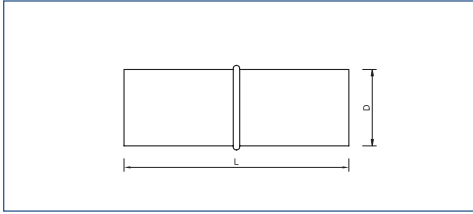
Symbol	Height H [mm]	Length L [mm]	Sale unit	Package [pcs/pallet]	Weight [kg/m ²]	Article no.
FS 2001 light type	500 - 1000	3500	pcs	20	5	-

Flexible pipe AR-FLEX

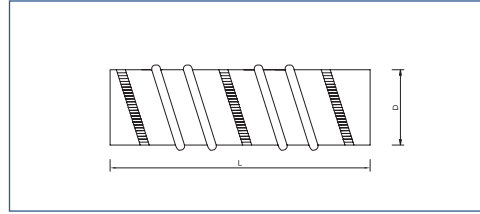


Symbol	Dimensions		Sale unit [3 m]	Package [pcs]	Weight [kg/pcs]	Article no.
	D [mm]	L [mm]				
AR-FLEX 40-3000	40	3000	pcs	1	1,11	AS-TR-RP-0-18998
AR-FLEX 50-3000	50	3000	pcs	1	1,41	AS-TR-RP-0-19045
AR-FLEX 60-3000	60	3000	pcs	1	1,65	AS-TR-RP-0-19001
AR-FLEX 65-3000	65	3000	pcs	1	1,80	AS-TR-RP-0-19003
AR-FLEX 70-3000	70	3000	pcs	1	1,95	AS-TR-RP-0-19009
AR-FLEX 80-3000	80	3000	pcs	1	2,19	AS-TR-RP-0-19014
AR-FLEX 90-3000	90	3000	pcs	1	2,40	AS-TR-RP-0-19018
AR-FLEX 100-3000	100	3000	pcs	1	2,70	AS-TR-RP-0-19021
AR-FLEX 120-3000	120	3000	pcs	1	3,15	AS-TR-RP-0-19022
AR-FLEX 135-3000	135	3000	pcs	1	3,48	AS-TR-RP-0-19023
AR-FLEX 150-3000	150	3000	pcs	1	3,96	AS-TR-RP-0-19025

Connector for AR-FLEX pipes



Internal connector SVR

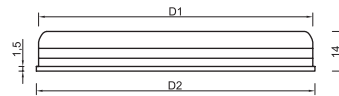


Outer connector ARZ

Symbol	Dimensions		Weight [kg/pcs]	Sale unit	Article no.
	D [mm]	L [mm]			
ARZ 40	45	250	0,10	pcs	AS-TR-RP-4-43053
ARZ 50	55	250	0,12	pcs	AS-TR-RP-4-43054
ARZ 60	65	250	0,14	pcs	AS-TR-RP-4-43055
ARZ 65	70	250	0,15	pcs	AS-TR-RP-4-43056
ARZ 70	75	250	0,16	pcs	AS-TR-RP-4-43057
ARZ 80	85	250	0,20	pcs	AS-TR-RP-4-43058
ARZ 90	95	250	0,23	pcs	AS-TR-RP-4-43059
SVR 100*	100	200	0,20	pcs	AS-TR-RP-4-43060
SVR 120*	120	200	0,30	pcs	AS-TR-RP-4-43061
SVR 135*	135	200	0,45	pcs	AS-TR-RP-4-43062
SVR 150*	150	200	0,55	pcs	AS-TR-RP-4-43063

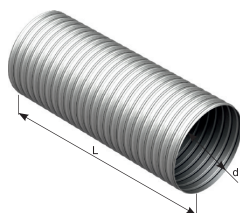
* - internal connector, possibility to connect AR-FLEX pipes with rigid pipes AR

Ending element for AR-FLEX



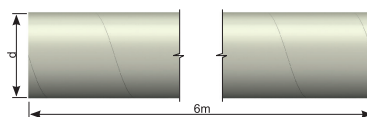
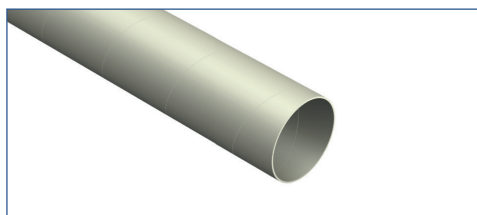
Symbol	Dimensions		Quantity in package [pcs/carton]	Article no.
	D1 [mm]	D2 [mm]		
ARDK 40	40	44	4000	AS-TR-RP-4-41748
ARDK 50	50	54	2500	AS-TR-RP-4-41749
ARDK 60	60	64	1750	AS-TR-RP-4-31244
ARDK 65	65	69	1000	AS-TR-RP-4-41750
ARDK 70	70	74	1000	AS-TR-RP-4-41751
ARDK 80	80	84	800	AS-TR-RP-4-41752
ARDK 100	100	104	500	AS-TR-RP-4-41753

Rigid pipe AR



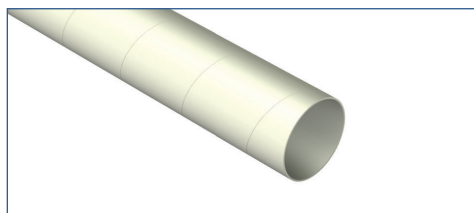
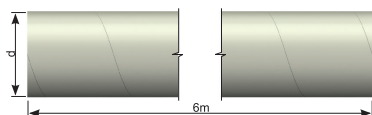
Symbol	Dimensions		Sale unit [3 m]	Package [pcs]	Weight [kg/ pcs]	Article no.
	D [mm]	L [mm]				
AR 180-3000	180	3000	pcs	1	6,30	AS-TR-RP-0-23274
AR 200-3000	200	3000	pcs	1	6,90	AS-TR-RP-0-23275
AR 250-3000	250	3000	pcs	1	8,70	AS-TR-RP-0-23276
AR 280-3000	280	3000	pcs	1	9,90	AS-TR-RP-0-23277
AR 300-3000	300	3000	pcs	1	10,5	AS-TR-RP-0-23278
AR 350-3000	350	3000	pcs	1	14,7	AS-TR-RP-0-23279
AR 400-3000	400	3000	pcs	1	16,8	AS-TR-RP-0-23280
AR 450-3000	450	3000	pcs	1	18,9	AS-TR-RP-0-23281
AR 500-3000	500	3000	pcs	1	21,0	AS-TR-RP-0-23282
AR 550-3000	550	3000	pcs	1	23,1	AS-TR-RP-0-23283
AR 600-3000	600	3000	pcs	1	25,2	AS-TR-RP-0-23284
AR 650-3000	650	3000	pcs	1	27,3	AS-TR-RP-0-23285
AR 700-3000	700	3000	pcs	1	29,4	AS-TR-RP-0-23286
AR 750-3000	750	3000	pcs	1	41,1	AS-TR-RP-0-23287
AR 800-3000	800	3000	pcs	1	43,8	AS-TR-RP-0-23288
AR 850-3000	850	3000	pcs	1	46,5	AS-TR-RP-0-23289
AR 900-3000	900	3000	pcs	1	49,2	AS-TR-RP-0-23290
AR 950-3000	950	3000	pcs	1	51,9	AS-TR-RP-0-23291
AR 1000-3000	1000	3000	pcs	1	67,2	AS-TR-RP-0-23292
AR 1050-3000	1050	3000	pcs	1	70,5	AS-TR-RP-0-23293
AR 1100-3000	1100	3000	pcs	1	73,8	AS-TR-RP-0-23294
AR 1150-3000	1150	3000	pcs	1	77,1	AS-TR-RP-0-23295
AR 1200-3000	1200	3000	pcs	1	98,4	AS-TR-RP-0-23296
AR 1250-3000	1250	3000	pcs	1	102,6	AS-TR-RP-0-23297
AR 1300-3000	1300	3000	pcs	1	106,8	AS-TR-RP-0-23298
AR 1400-3000	1400	3000	pcs	1	114,9	AS-TR-RP-0-23299
AR 1500-3000	1500	3000	pcs	1	123,3	AS-TR-RP-0-23300
AR 1600-3000	1600	3000	pcs	1	131,4	AS-TR-RP-0-23301
AR 1800-3000	1800	3000	pcs	1	147,9	AS-TR-RP-0-23302
AR 2000-3000	2000	3000	pcs	1	164,4	AS-TR-RP-0-23303

Cardboard formwork pipe - spiral



Symbol	Dimensions		Sale unit	Package [pcs]	Weight [kg/m]	Article no.
	Diameter [mm]	Standard length [m]				
Cardboard formwork pipe - spiral D152	152	3 4	m	pcs	1,3	AS-TR-KT-0-00798
Cardboard formwork pipe - spiral D202	202	3 4	m	pcs	1,7	AS-TR-KT-0-00799
Cardboard formwork pipe - spiral D250	250	3 4	m	pcs	2,1	AS-TR-KT-0-00800
Cardboard formwork pipe - spiral D300	300	3 4	m	pcs	2,5	AS-TR-KT-0-00801
Cardboard formwork pipe - spiral D350	350	3 4	m	pcs	3,6	AS-TR-KT-0-00802
Cardboard formwork pipe - spiral D400	400	3 4	m	pcs	4,1	AS-TR-KT-0-00803
Cardboard formwork pipe - spiral D450	450	3 4	m	pcs	4,6	AS-TR-KT-0-00804
Cardboard formwork pipe - spiral D500	500	3 4	m	pcs	5,1	AS-TR-KT-0-00805
Cardboard formwork pipe - spiral D550	550	3 4	m	pcs	6,3	AS-TR-KT-0-00806
Cardboard formwork pipe - spiral D600	600	3 4	m	pcs	6,9	AS-TR-KT-0-00807
Cardboard formwork pipe - spiral D650	650	3 4	m	pcs	7,5	AS-TR-KT-0-00808
Cardboard formwork pipe - spiral D700	700	3 4	m	pcs	8,0	AS-TR-KT-0-00809
Cardboard formwork pipe - spiral D750	750	3 4	m	pcs	8,5	AS-TR-KT-0-00810
Cardboard formwork pipe - spiral D800	800	3 4	m	pcs	9,3	AS-TR-KT-0-00811
Cardboard formwork pipe - spiral D900	900	3 4	m	pcs	10,5	AS-TR-KT-0-00812
Cardboard formwork pipe - spiral D1000	1000	3 4	m	pcs	11,5	AS-TR-KT-0-00796
Cardboard formwork pipe - spiral D1200	1200	3 4	m	pcs	13,7	AS-TR-KT-0-00797

Cardboard formwork pipe - smooth



Symbol	Dimensions			Sale unit	Package [pcs]	Weight [kg/m]	Article no.
	Diameter [mm]	Standard length [m]					
Cardboard formwork pipe - smooth D202	202	3	4	m	pcs	1,7	AS-TR-KT-0-00782
Cardboard formwork pipe - smooth D250	250	3	4	m	pcs	2,1	AS-TR-KT-0-00783
Cardboard formwork pipe - smooth D300	300	3	4	m	pcs	2,5	AS-TR-KT-0-00784
Cardboard formwork pipe - smooth D350	350	3	4	m	pcs	3,6	AS-TR-KT-0-00785
Cardboard formwork pipe - smooth D400	400	3	4	m	pcs	4,1	AS-TR-KT-0-00786
Cardboard formwork pipe - smooth D450	450	3	4	m	pcs	4,6	AS-TR-KT-0-00787
Cardboard formwork pipe - smooth D500	500	3	4	m	pcs	5,1	AS-TR-KT-0-00788
Cardboard formwork pipe - smooth D550	550	3	4	m	pcs	6,3	AS-TR-KT-0-00789
Cardboard formwork pipe - smooth D600	600	3	4	m	pcs	6,9	AS-TR-KT-0-00790
Cardboard formwork pipe - smooth D650	650	3	4	m	pcs	7,5	AS-TR-KT-0-00791
Cardboard formwork pipe - smooth D700	700	3	4	m	pcs	8,0	AS-TR-KT-0-00792
Cardboard formwork pipe - smooth D750	750	3	4	m	pcs	8,5	AS-TR-KT-0-00793
Cardboard formwork pipe - smooth D800	800	3	4	m	pcs	9,3	AS-TR-KT-0-00794
Cardboard formwork pipe - smooth D900	900	3	4	m	pcs	10,5	AS-TR-KT-0-00795
Cardboard formwork pipe - smooth D1000	1000	3	4	m	pcs	11,5	AS-TR-KT-0-00781

Fluid sprayer



Symbol	Working capacity [l]	Max. working pressure [MPa]	Package	Weight [kg/pcs]	Sale unit	Article no.
Plastic sprayer	6	0,35	carton	1,7	pcs	NA-NA-00-4-04833
Metal sprayer Gloria	5	0,60	bag	4,8	pcs	CH-AC-00-0-02684