

Construction equipment

Use of specialistic equipment is way to accelerate construction works and significant savings for contractor. Forbuild company have in offer incl. containers for people transportation allowing executing some works on height, wide range of containers, pallets for transportation and storage, unloading platforms and containers for concrete.

Container for concrete - type A

Symbol	Capacity [m ³]	Container weight* [kg]	Weight with max. load* [kg]	Sale unit	Article no.
Typ A 0,75 m ³	0,75	260	2135	pcs	SB-TW-PB-0-05237
Typ A 1,00 m ³	1,00	276	2776	pcs	SB-TW-PB-0-05236
Typ A 1,50 m ³	1,50	410	4160	pcs	SB-TW-PB-0-05913
Typ A 2,00 m ³	2,00	426	5426	pcs	SB-TW-PB-0-05238

* Weight without chain sling



Container for concrete - type A/L

with chain

It has mechanism for container operation from lower level using chain (up to height around 4m).

Symbol	Capacity [m ³]	Container weight* [kg]	Weight with max. load* [kg]	Sale unit	Article no.
Typ A/L 0,75 m ³	0,75	260	2310	pcs	SB-TW-PB-0-05974
Typ A/L 1,00 m ³	1,00	276	2976	pcs	SB-TW-PB-0-05628
Typ A/L 1,50 m ³	1,50	410	4160	pcs	SB-TW-PB-0-05579
Typ A/L 2,00 m ³	2,00	426	5426	pcs	SB-TW-PB-0-20799

*Weight without chain sling





Container for concrete - type B with working platform

Symbol	Capacity [m ³]	Container weight* [kg]	Weight with max. load* [kg]	Sale unit	Article no.
Typ B 0,75 m ³	0,75	514	2400	pcs	SB-TW-PB-0-05347
Typ B 1,00 m ³	1,00	528	3275	pcs	SB-TW-PB-0-01863
Typ B 1,50 m ³	1,50	670	5070	pcs	SB-TW-PB-0-05975

*Weight without chain sling



Container for concrete - type C

Symbol	Capacity [m ³]	Container weight* [kg]	Weight with max. load* [kg]	Sale unit	Article no.
Typ C 0,75 m ³	0,75	255	2130	pcs	SB-TW-PB-0-05926
Typ C 1,00 m ³	1,00	273	2773	pcs	SB-TW-PB-0-01864

*Weight without chain sling

Additional accessories for containers for concrete

CHAIN SLINGS

Symbol	Container capacity	Type of container	Article no.
Chain sling 2ZŁ 7,5/5,3 t 1,2m	0,75 m ³ , 1,00 m ³	B	SB-AS-00-0-04642
Chain sling 2ZŁ 11,2/8,0 t 1,2m	1,50 m ³	B	SB-AS-00-0-04641
Chain sling 3ZŁ 4,25/3,0 t 1,2m	0,75 m ³ , 1,00 m ³	A, A/L, C	SB-AS-00-0-04643
Chain sling 3ZŁ 6,7/4,75 t 1,2m	1,50 m ³	A, A/L	SB-AS-00-0-04644
Chain sling 3ZŁ 8,0/6,0 t 1,5m	2,00 m ³	A, A/L	SB-AS-00-0-05235

SLEEVES AND CLAMPS

Symbol	Material	Unit	Article no.
Sleeve clamping ring for container D=200 mm	Stainless steel	pcs	SB-TW-PB-0-01866
Sleeve container D=200 mm	Reinforced PVC	mb	SB-TW-PB-0-01867

Mortar tub

Symbol	Capacity [l]	Container weight [kg]	Weight with max. load [kg]	Sale unit	Article no.
Mortar tub 200l	200	17	417	pcs	SB-TW-PB-0-01869



Container for soil & powdery materials - type A

Symbol	Capacity [m³]	Container weight* [kg]	Weight with max. load* [kg]	Sale unit	Article no.
Type A 1,00 m³	1,00	160	1900	pcs	SB-TW-MS-0-01862

*Weight without chain sling



Container for hardcore - type B

Symbol	Capacity [m³]	Container weight* [kg]	Weight with max. load* [kg]	Sale unit	Article no.
Type B 1,00 m³	1,00	181	2000	pcs	SB-TW-MS-0-01861
Type B 1,50 m³	1,50	240	2970	pcs	SB-TW-MS-0-01860

*Weight without chain sling



Capsizable container- type C

Symbol	Capacity [m³]	Container weight [kg]	Weight with max. load [kg]	Sale unit	Article no.
Type C 1,00 m³	1,00	376	2200	pcs	SB-TW-MS-0-01865

*Weight without chain sling



Transportation basket KT02

for people transportation

Symbol	Capacity** [kg]	Container weight* [kg]	Weight with max. load* [kg]	Sale unit	Article no.
Transportation basket KT02	300	280	580	pcs	SB-TW-KT-0-01881

* Weight without chain sling

** Max. 2 persons + accessories



Symbol	Type of container	Article no.
Chain sling 4ZŁ 0,6 t 1,6m	KT02	SB-AS-00-0-20851



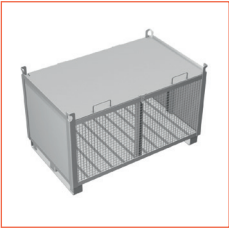
Transportation container - type A

Symbol	Base dimensions [m]	Height [m]	Container weight [kg]	Weight with max. load [kg]	Sale unit	Article no.
Type A	1,2x0,8	0,8	69,2	1200	pcs	SB-TW-MT-0-05979



Transportation container - type B

Symbol	Base dimensions [m]	Height [m]	Container weight [kg]	Weight with max. load [kg]	Sale unit	Article no.
Type B	1,2x0,8	0,8	87,9	1200	pcs	SB-TW-MT-0-05981



Transportation container - type C

Symbol	Base dimensions [m]	Height [m]	Container weight [kg]	Weight with max. load [kg]	Sale unit	Article no.
Type C	1,2x0,8	0,8	101,7	1200	pcs	SB-TW-MT-0-05982



Transportation container - type E

Symbol	Base dimensions [m]	Height [m]	Container weight [kg]	Weight with max. load [kg]	Sale unit	Article no.
Type E	1,25x1,2	1,2	86,3	600	pcs	SB-TW-MT-0-05810



Transportation container - type F

Symbol	Base dimensions [m]	Height [m]	Container weight [kg]	Weight with max. load [kg]	Sale unit	Article no.
Type F	1,2x1,1	1,15	105	606	pcs	SB-TW-MT-0-05811

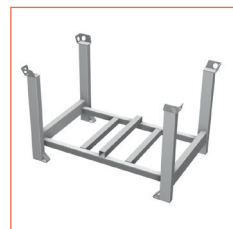
Full universal container

Symbol	Base dimensions [m]	Height [m]	Container weight [kg]	Weight with max. load [kg]	Sale unit	Article no.
Full universal container	1,2x0,8	0,62	76	1100	pcs	SB-TW-MT-0-05984



Pallet for props

Symbol	Base dimension [m]	Height [m]	Container weight [kg]	Weight with max. load [kg]	Sale unit	Article no.
Pallet for props 120	1,15x0,75	0,765	35	1500	pcs	SB-TW-MT-0-07001



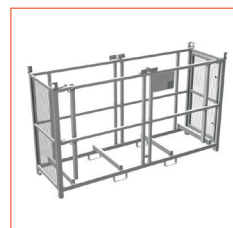
Transportation container

Symbol	Base dimension [m]	Height [m]	Container weight [kg]	Weight with max. load [kg]	Sale unit	Article no.
Transportation container	1,3x0,8	0,8	71,6	1200	pcs	BH-SX-00-0-00899

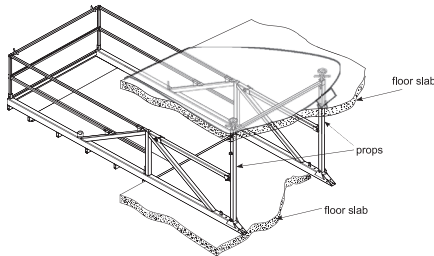
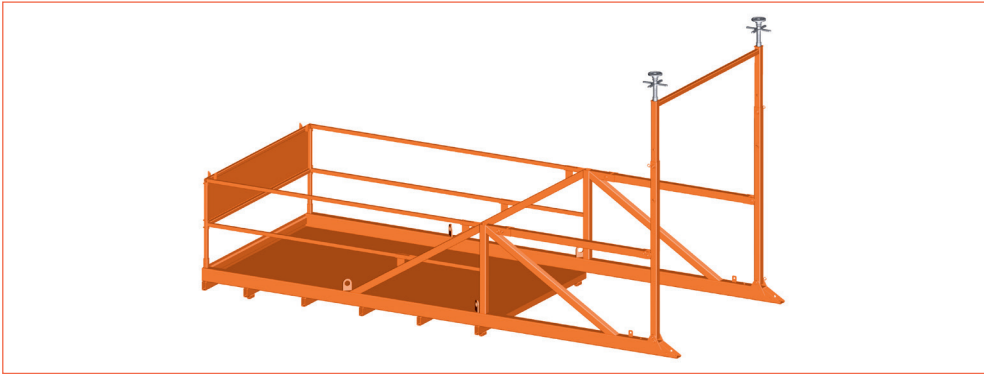


Transportation container for planks and meshes

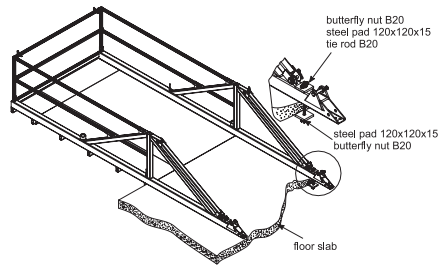
Symbol	Base dimension [m]	Height [m]	Container weight [kg]	Weight with max. load [kg]	Sale unit	Article no.
Transportation container for planks and meshes	2,69x0,84	1,505	181	1200	pcs	BH-SX-00-0-00901



Unloading platform 2200



Installation between floor slabs



Installation on the floor slab

Symbol	Capacity [kg]	Platform weight [kg]	Distance between floor slabs [m]	Length of support on floor slab	Total length [m]	Total width [m]	Dimension for transportation [m]	Sale unit	Article no.
Unloading platform 2200	2200	1225	2,5-4,0	2,5	6,0	2,38	6,65 x 2,45 x 1,33	pcs	SB-TW-PR-0-01882

ADDITIONAL EQUIPMENT

Name	Unit	Weight [kg/unit]	Article no.
Buterfly nut B20	pcs	0,41	AS-DK-SC-1-00080
Steel pad 120x120x15mm 1xØ25mm (black steel)	pcs	1,69	SB-TW-PR-4-20894
Steel pad 120x120x15 mm 1xØ25mm (electro galvanizing)	pcs	1,73	SB-TW-PR-4-20895
Tie rod B20	mb	2,60	AS-DK-SC-1-00760